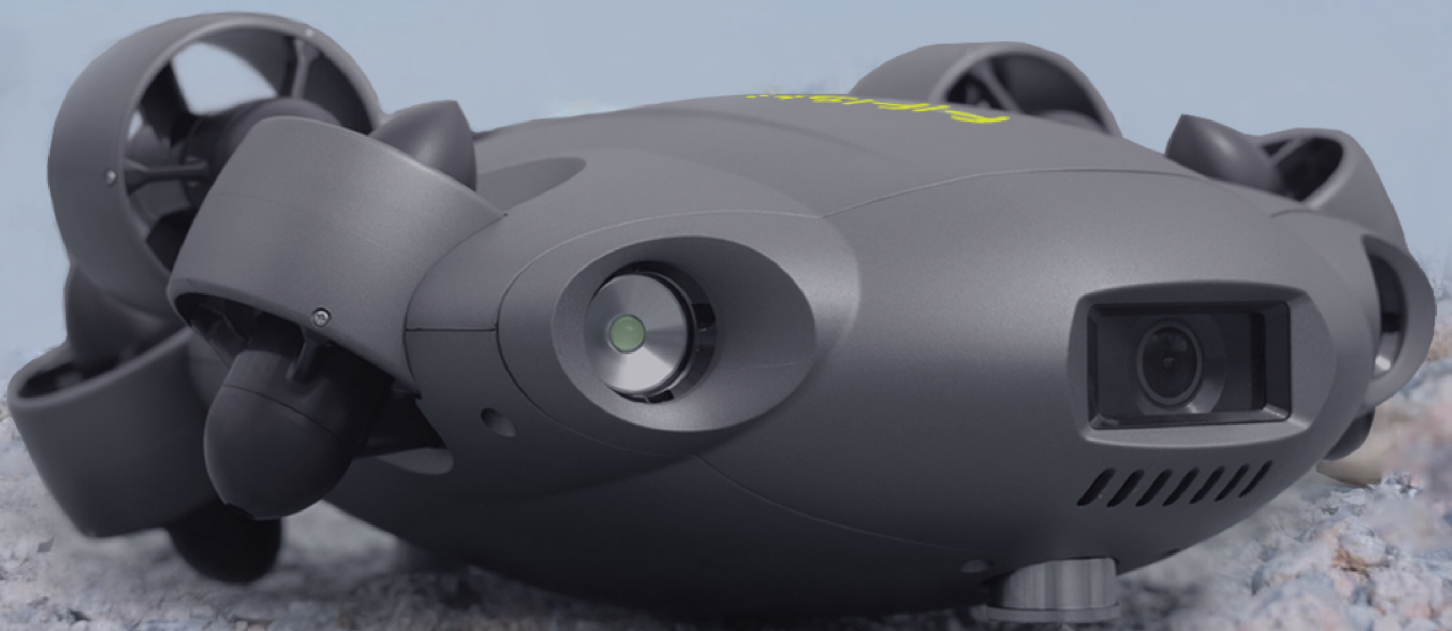




# FIFISH V6 EXPERT

Underwater Productivity Tool



**Sport ROV**

**Professional**

# Compact Size & Operational ROV Platform

High-Performance & Multi-Functional Underwater Productivity Tool

## FIFISH V6 EXPERT

FIFISH V6 EXPERT is a professional-class underwater robot and a multi-capable tool built to enhance your underwater missions and operations. The V6 EXPERT can be equipped with a myriad of accessories as well as an onshore power supply system, delivering optimal performance and diving time for your expeditions.

**100m**  
Max Depth

**3 Knots**  
Max Speed

**-10~60°C**  
Temperature Range

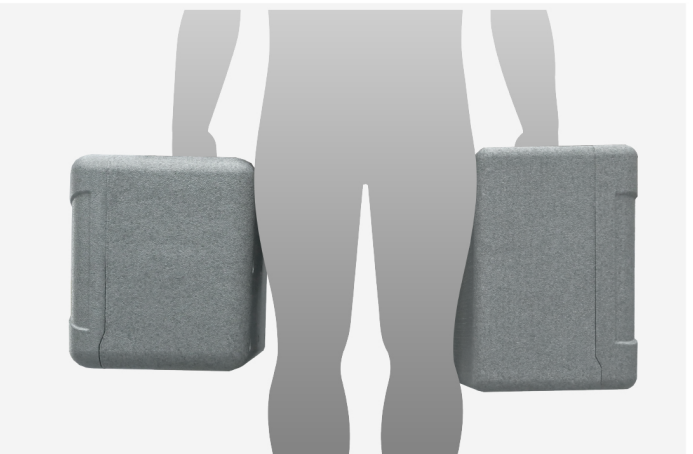
**1.5 Hrs** (With 1m/s Currents)  
**6 Hrs** (In Still Waters)

### ■ Lasting Power, High Performance & Secure Reliability

Seamless and quick deployment of energy packs for smooth, lengthy and uninterrupted diving sessions.

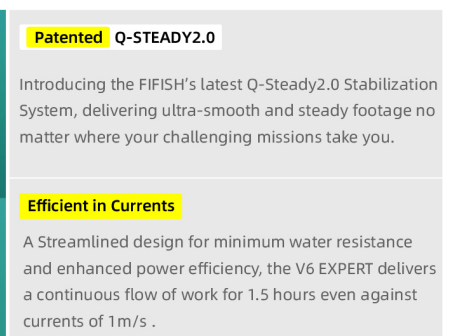
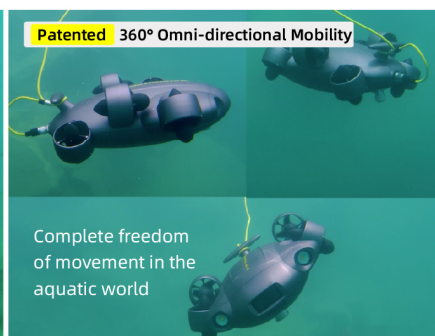
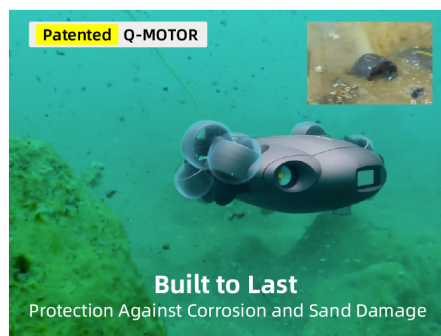


Quick & simple installation for continuous workflow



For easy carrying, deployment, operation & maintenance

### ■ Streamlined Design & Robust Build





## ■ 4K UHD Low Noise Shooting for Cinematic Clarity

The FIFISH V6 EXPERT comes equipped with a UHD 4K underwater camera lens, along with a 166° ultra-wide field of view, 12-megapixel resolution, 240 FPS slow-motion filming capabilities, and much more. V6 EXPERT's vision enhancement algorithms bring out the vibrancy of the underwater environment, so you can capture every detail needed in your aquatic operations and missions.



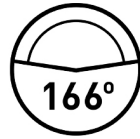
Supports  
DNG Format



12 Megapixel  
Resolution



f/2.5 Aperture



166° Field of View



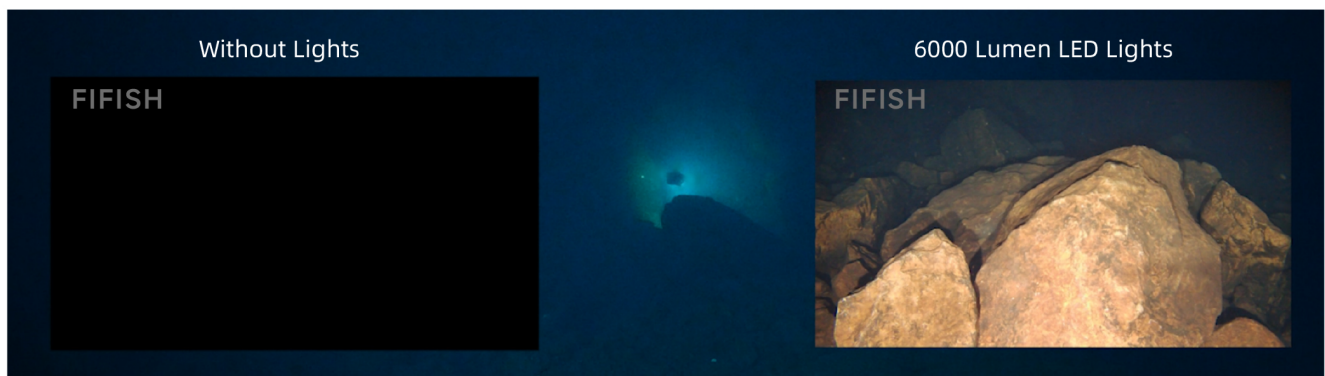
240 FPS Slo-Mo  
Filming



4K Ultra HD  
Video Quality

## ■ Enhanced Lighting for Optimal Imaging

The FIFISH V6 EXPERT comes equipped with a pair of ultra-bright 6000 lumen LED lights alongside its 4K UHD camera, delivering brilliant, vivid and vibrant images and footages within even the darkest spaces.



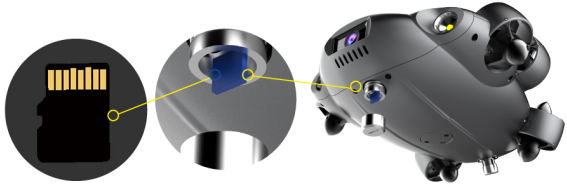
## ■ VR Intelligent Head Tracking

FIFISH V6 EXPERT applies unique sensory controls that provide the user a truly immersive underwater experience from the ROV's first-person perspective. Through the smart VR goggles, take the **QYSEA patented** full 360° directional and posture control of the drone simply by rotating the head. This intelligent feature is accurate, easy to use, and a breakthrough in underwater exploration.



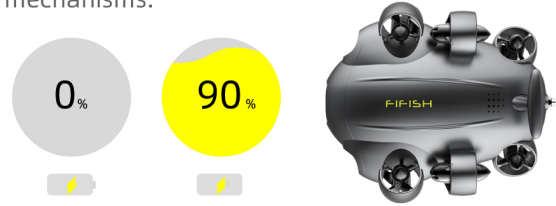
## ■ Micro SD Card Fast Transfer & Storage

The SD card can be taken out of the V6 EXPERT for data exporting with ease. The ROV comes equipped with a 128GB card for ample space and storage of high-definition films and images.



## ■ Powerful Battery with Quick Charge Enabled

The V6 EXPERT has a 14400mAh super-capacity battery that provides long-lasting battery life, quick charging capabilities, and multiple safety and security mechanisms.



**Q-CHARGE:** Fast-charging to 90% capacity within 1 hour

## ■ Light, Portable & Worry Free

FIFISH V6 EXPERT helps your underwater operations become organized and worry-free. Its compactness allows easy transportation to wherever your missions take you, and its power efficiency delivers you continuous and uninterrupted diving sessions.



**EPP Case Specifications:**  
Length: 728mm  
Width: 470mm  
Height: 272.5mm

### V6 EXPERT M100 Standard Accessories



## ■ FIFISH V6 EXPERT PACKAGES

SKU	M100	M100A	M200	M200A	MP200	EP300
Cable Length	100m	100m	200m	200m	200m+100m	300m+100m
Spool	Manual Spool *1	Manual Spool *1	Manual Spool *1	Manual Spool *1	Manual Spool *2	E-Spool *1 Manual Spool *1
Package	EPP Box *1	Industry Case *1	Industry Case *1	Industry Case *1	EPP Box *2	Industry Case *1 EPP Box *1
OPSS	×	×	×	×	√	√
Robotic Arm (w/ Grippers)	×	√	×	√	×	×



## ■ Applications & Scenarios



## ■ Tools & Add-Ons

### Inspection Tools



Q-Camera



2D Image Sonar



HDMI Box 2.0



Controller Sun Hood



Sports Camera Mount



External Lighting Mount



Remote Control System

### Measurement Tools



Compass Ruler



Laser Scaler



Distance Meter



Altimeter



Underwater Metal Detector

### Navigation Tools



UQPS-Underwater Quick Positioning System

### Manipulator Tools



Robotic Arm



Retrieval Hook



Fishing Net



Underwater Dozer



Net Patch Kit



Parallel Grippe

### Water Quality Tools



Water Sampler (100ml)



Water Sampler (500ml)



Dissolved Oxygen Sensor



Salinity Sensor



Turbidity Sensor



pH Sensor



Mud Sampler

# FIFISH V6 EXPERT Specifications

## ■ ROV

Dimensions	383mm(l) x 331mm(w) x 143mm(h)
	4.6kg
Thrusters	6 Thrusters (FIFISH Q-Motor Technology)
Maneuverability	6 Degrees of Freedom Movement: left & right, up & down, forward & backward Rotation: 360° pitches, 360° rolls, 360° yaws
Posture Lock™	Lock the ± 0.1° pitch or roll angle, in any direction
Hovering	Keep the ROV suspending in ± 1 cm Maximum 3 knots (1.5 m/s)
Depth Rating	100M
Temperature Range	-10 °C ~ 60 °C
Power	1-4h (Dependent on Work Environment) 156Wh Capacity 1 Hour Quick Charging (90% Capacity) Charging voltage: 12.6V
Battery Type	Li-ion Panasonic 21700

## ■ LED Lights

Brightness	3000 Lumen LED * 2
CCT	5500K (Correlated Color Temperature)
Beam Angle	120°
Brightness Levels	3 Brightness Levels

## ■ Charger

ROV	Input: 100-240V, 50/60 Hz, 3.0A MAX Output: 12.6V = 10A
RC	Input: 100-240 V, 50/60 Hz, 0.5 A MAX Output: 5V 3A

## ■ Tether & Spool

Cable Length	100m/ 200m
Breaking Force	100kgf
Tether Diameter	4.6mm
Dimensions	238 mm x 213 mm x 205 mm

## ■ Camera

Sensor	1/2.3" SONY CMOS
Pixels	12MP
ISO Range	100-3200 (Auto/Manual)
Lens	Field of View = Above Water: 166° / Underwater: 96° Aperture: f/2.5 Focus Range: 0.3m~+∞
Shutter Speed	5~1/5000 Second
Burst Shooting	1 / 3 / 5 / 10 Frames
White Balance	2500K-7500K (for Seawater & Freshwater, Auto/Manual)
Exposure Comp.	-3.0 EV to +3.0 EV (Auto/Manual)
Photo Resolution	4:3 = 4000 × 3000 / 16:9 = 3840 × 2160
Photo Format	JPEG, RAW (DNG)
Video Resolution	4K UHD: 25/30 fps 1080P FHD: 25/30/50/60/100/120 fps 720P HD: 25/30/50/60/100/120/200/240 fps
Video Format	MP4
Stabilization	EIS (Electronic Image Stabilization)
Colour Encoding	NTSC & PAL
Storage	External MicroSD Storage (128GB Standard, Supports up to 256GB)

## ■ Controller

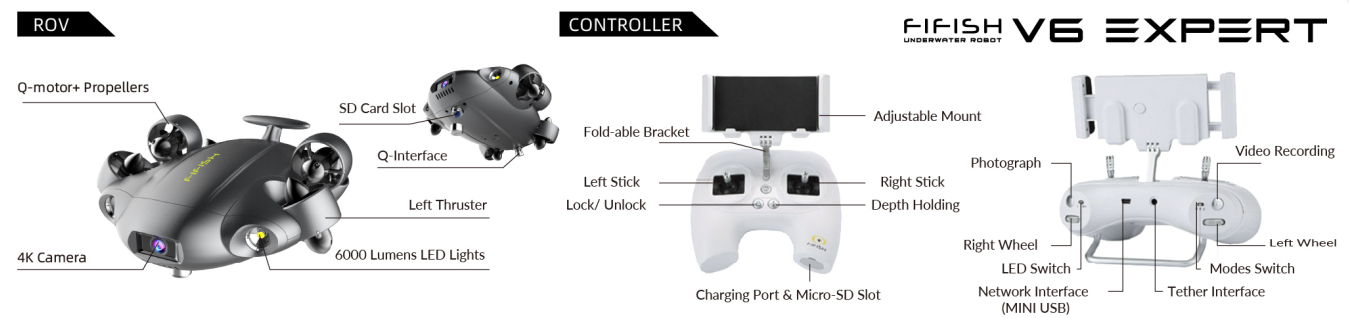
Wireless	5GHz WiFi, 11a,n,ac
Battery Life	Up to 4 hours
SD Card Support	Micro-SD Card FAT32 & EXFAT Format (to 128GB)
HDMI Output	QYSEA HDMI Output Box

## ■ Q-Interface

Ports	1
Material	Stainless steel 316
Voltage	9~12V

※ Specifications are subject to change without prior notice.  
Please contact QYSEA for detailed parameters.

## Component Breakdown



## Connect with QYSEA



QYSEA Website



QYSEA Media

QYSEA Tech Co., LTD  
1/F, Phase 2, Galaxy Incubator  
Shenzhen, Guangdong, PRC  
partner@qysea.com  
www.qysea.com



YouTube  
@QYSEA-FIFISH



Facebook  
@FIFISH.QYSEA



LinkedIn  
@QYSEA-FIFISH



Instagram  
@QYSEA.FIFISH